



CTM 013 SAVIEM SM

CONVERSION KIT FOR ITALERI No. 756

CTM PHOTOETCHED AND RESIN PARTS



CTM 013 SAVIEM SM



CONVERSION
KIT FOR
ITALERI No. 756



- DETACH WITH KNIFE



- BEND



- REPLACE



- OPTIONAL



- NUMBER OF WORKING STEPS



- MAKE A HOLE



- GRIND

This set is not a children's toy and was designed for professional modellers only who already have some skills in working with photoetched parts. Special tools for bending of photoetched parts is recommended when working with this set. Non using this tool during bending may cause destruction of the part. Careful bending of the most of the parts could be also using a metal ruler, a sharp knife and a tweezer on a hard surface. Pay attention, be careful and keep your safety and health in mind during work!

For gluing and filling a cyanoacrylate glue and a glue removing liquid is recommended. Whe (or even before) working with each part inspection of the real part on the vehicle or a picture of the real thing is recommended and helpful.

Ussing some of the etched parts may be conditional on kit plastic parts modification.

CTM 013 SAVIEM SM

This set cover Saviem trucks built in France between early 1968 and 1978 and is intended for Italeri kit No. 756. The set contains the grille for Saviem trucks, all the necessary badges and lettering, old type of dashboard, drive axle wheelhubs, door ventilation window frames and windscreen wipers.

Parts description:

- 1/ grille mesh (lower part)
- 2/ grille frame (upper part)
- 3/ drive axle wheelhubs (lower part)
- 4/ drive axle wheelhubs (upper part)
- 5/ V8 logo (fits part No.1)
- 6/ late Renault logo (fits part No.1)
- 7/ loudspeaker frame (fits part No.25)
- 8/ wipers
- 9/ wipers arms
- 10/ Saviem plate (fitted on the rear part of the vehicle)
- 11/ loudspeaker mesh (fits part No.7)
- 12/ door ventilation windows frames
- 13/ various type of designation (fits part No.1)
- 14/ SAVIEM lettering (front panel, below the window)

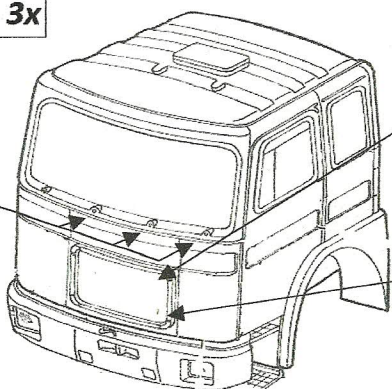
- 15/ windscreen defroster vents (fits upper part of dashboard)
- 16/ early Renault logo (for use with part No.5, fits part No.1)
- 17/ cab sidewalls V8 logos (for use with part No.5,16)
- 18/ rear reflex reflector (for mudguards or bumper)
- 19/ dashboard ash trays (fits part No. 25)
- 20/ radio (fits part No.25)
- 21/ dashboard upper lath (fits part No.25)
- 22/ dashboard lower lath (fits part No.25)
- 23/ gauges upper part (fits part No.24)
- 24/ gauges lower part (fits part No.24)
- 25/ dashboard main part
- 26/ dashboard locker door (fits part No.25)
- 27/ early Renault logo (fits part No.1)
- 28/ rocker cover lettering for engine conversion (bonus)

8/ wipers R 3x

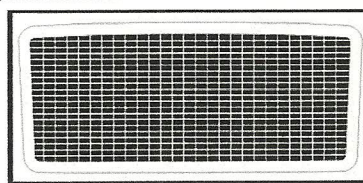


9/ wipers arms

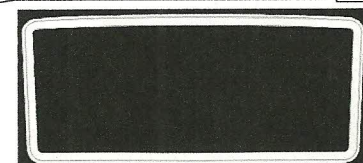
R 3x



1/ grille mesh (lower part) R



2/ grille frame (upper part) R



14/ SAVIEM lettering (front panel, below the window)

SAVIEM

6/ late Renault logo



27/ early Renault logo



5/ V8 logo (fits part No.1)



13/ various type of designation ?



16/ early Renault logo (for use with part No.5, fits part No.1)



23/ gauges upper part (fits part No.24)



R

15/ windscreen defroster vents (fits upper part of dashboard)



R

24/ gauges lower part

(fits part No.25)



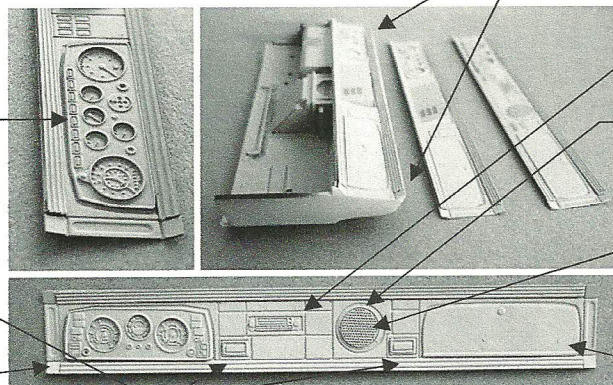
R

19/ dashboard ash trays

(fits part No. 25)



R



20/ radio (fits part No.25)



R

7/ loudspeaker frame (fits part No.25)



R

11/ loudspeaker mesh (fits part No.7)



R

26/ dashboard locker door (fits part No.25)



R

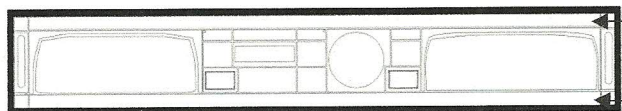
25/ dashboard main part

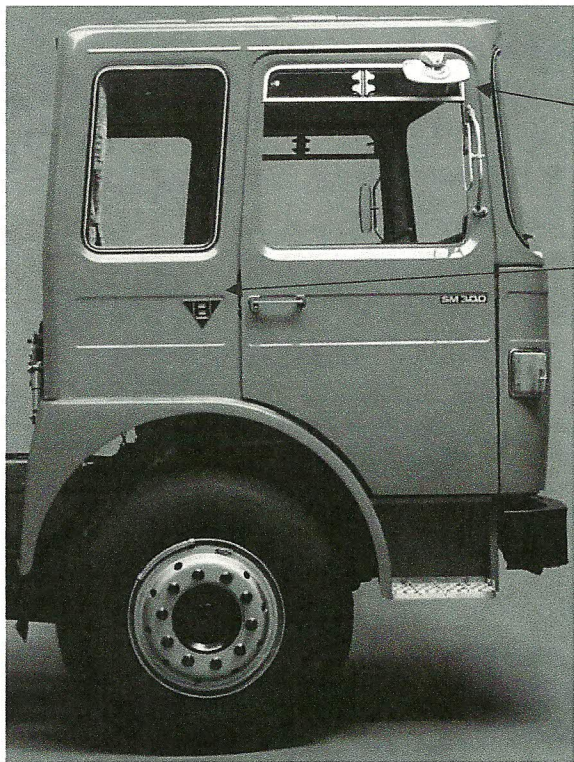
R

21/ dashboard upper lath (fits part No.25)



22/ dashboard lower lath (fits part No.25)





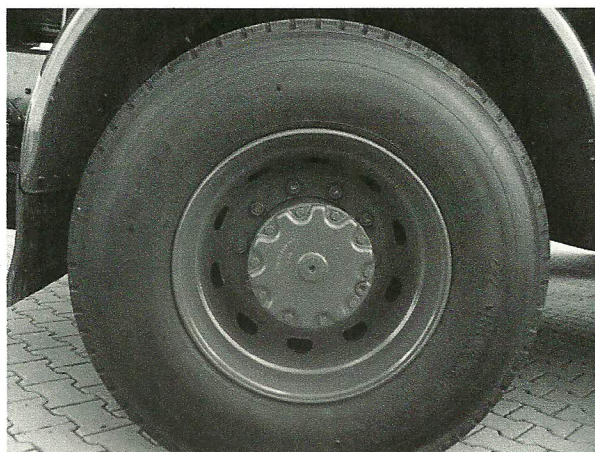
12/ door ventilation windows frames

2x R



17/ cab sidewalls V8 logos (for use with part No.5,16)

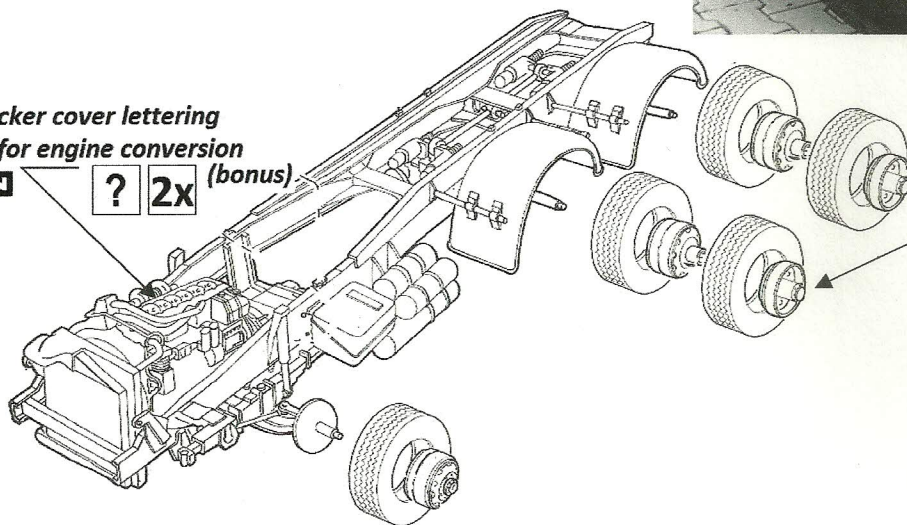
2x



28/ rocker cover lettering
for engine conversion
(bonus)

MAN

? 2x



3/ drive axle wheelhubs (lower part)

4x R

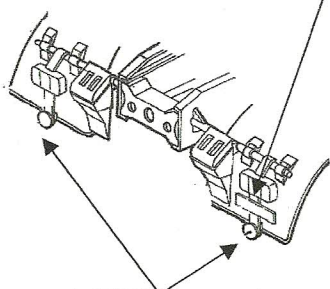


4/ drive axle wheelhubs (upper part)

4x R



10/ Saviem plate (fitted on the rear part of the vehicle) R



18/ rear reflex reflector (for mdguards or bumper) R 2x

